

## President's Corner

### ***This is your first year as KISS president and how will you start the year?***

As the president of KISS, I would like to work with the officers in a more goal-oriented way. If we set up our specific goals, then we may become clearer about what to do and may figure out how to serve our community better. Here is the list of the goals: ***increasing membership, improving the finance, increasing the KISS activities***. These goals can be evaluated by numbers. By the end of each year, we can check whether the goals are met.

### ***What are the initiatives of your presidency?***

The main initiative is to increase the activities that will benefit the KISS members and society in general. For example, this January, we hosted an online workshop, 유학설명회 (studying statistics in the U.S.), for students in Korea, where panels shared their experiences during their Ph.D. study in statistics and answered questions regarding how to prepare for studying abroad. The online workshop was very successful with about 60+ participants. We plan to host other activities that are helpful to KISS members.

### ***Will there be any changes in KISS officers or directors?***

I am fortunate enough to get several talented volunteers to serve as KISS officers. Summer Han at Stanford University will serve as the executive director, Jong-Min Kim at U of Minnesota in Morris will serve as the general director, Hang J. Kim at the University of Cincinnati will serve as the financial director, Soyung Kim at the Medical College of Wisconsin will serve as the communications director, Won Chang at the University of Cincinnati will serve as the membership director, Jeong Hoon Jang at Yonsei University will serve as the membership co-director, Heekyung Ahn at Purdue University will continue to serve as the student representative, and MinJae Lee (University of Texas Southwestern) and Yeonhee Park (University of Wisconsin-Madison) will be serving as the program chairs. While the executive director will be in charge of regular events such as officers' meetings or annual KISS meetings, the membership director will be in charge of special events such as panel workshops or member's corners. The general director will be working with me on planning new KISS activities and drawing roadmap. Of course, I will work closely with the past president (MoonJung Cho) and the president elect (Mi-Ok Kim) for the big-picture ideas.

### ***What are KISS activities for this coming JSM?***

This coming JSM 2023 will be held in Toronto, Canada. We will have regular events (board meeting and the annual KISS meeting) and KISS-sponsored sessions at the JSM. In addition, the president and some officers will attend the COPSS board meetings at the JSM.

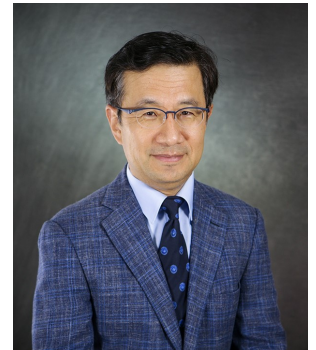
### ***Are there special upcoming events to share?***

It is somewhat early to announce it formally, but I am thinking of having another series of webinars on non-academic topics. It could be a series of interviews with statisticians, strategies for grant writing, or tips for how to find good research topics. Any topics that can be potentially beneficial to KISS members will be covered.

### ***Words to KISS members and friends?***

We are currently living in a time of rapid change and uncertainty, which can be both frightening and exhilarating. Despite this, new opportunities are constantly arising.

Collaboration and communication are essential in these uncertain and dynamic times. However, collaboration is not always easy, especially for those who have different cultural backgrounds. We believe that KISS can be a valuable platform for its members to come together, share knowledge and experiences, and unleash our collective intelligence. As individuals, we may feel limited, but through collaboration and communication, we can achieve great things. The KISS president and officers are dedicated to make sure that KISS provides a supportive environment where members can collaborate effectively and achieve their goals. We encourage all members to participate actively and engage in open communication to fully benefit from being a part of the KISS community.



Jae-Kwang Kim  
President  
jkim@iastate.edu

# KISS Newsletter

## Outgoing Officers



MOONJUNG CHO

Past-President  
2021-2022



JULIA LEE

Executive Director  
2021-2022



DONGJUN CHUNG

Communications Dir.  
2021-2022



HYUNGSUK TAK

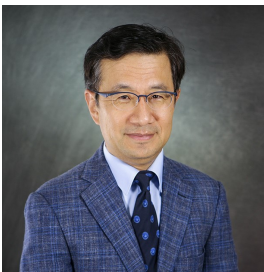
Program Chair  
2021-2022



YUN CHON

Finance Director  
2021-2022

## Incoming Officers



JAE-KWANG KIM

President  
2023-2024



MI-OK KIM

President-elect  
2025-2026



SUMMER HAN

Executive Director  
2023-2024



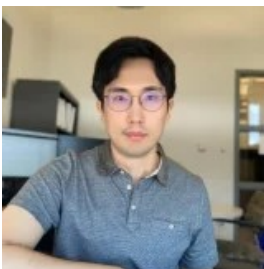
JONG-MIN KIM

General Director  
2023-2024



SOYOUNG KIM

Communications Dir.  
2023-2024



JEONG HOON JANG

Membership Co-Dir.  
2023-2024



HANG-JOON KIM

Finance Director  
2023-2024



YEONHEE PARK

Program Chair  
2023-2024

# Volume 13, Issue 1

## Officers with Continuing Services



WON CHANG

Membership Co-Dir.  
2021-2023



MINJAE LEE

Program Chair  
2022-2023



HEEKYUNG AHN

Student Rep.  
2021-2023

## Outgoing BOD Members



JONG-HYEON JEONG

Board Member  
2017-2022



MI-OK KIM

Board Member  
2017-2022



JI-HYUN LEE

Board Member  
2017-2022



SUNHEE KWON RO

Board Member  
2017-2022



KYUNGHEE SONG

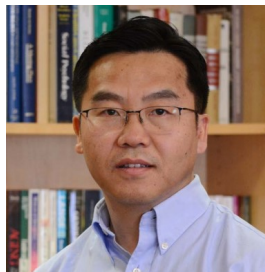
Board Member  
2017-2022

## Incoming BOD Members



YOUNGDEOK HWANG

Board Member  
2023-2028



ZHEZHEN JIN

Board Member  
2023-2028



JONG-MIN KIM

Board Member  
2023-2028



YOONKYUNG LEE

Board Member  
2023-2028



EUN-YOUNG MUN

Board Member  
2023-2028

# KISS Election

---

## KISS Election

The KISS had its presidential election and elected Dr. Mi-Ok Kim, Professor of Epidemiology & Biostatistics at the University of California, San Francisco, as the President-Elect. Dr. Kim will begin her term as the President-Elect in Jan. 2023. The Nomination and Election Committee was formed under Article 9 of the By-Laws, chaired by the Executive Director, Julia Lee. As appointed by the President, Jae-Kwang Kim, Drs. Summer Han (Stanford Univ.), Dong-Yun Kim (NIH), Frank Yoon (Google), and Hang Kim (Univ. of Cincinnati) served on the Committee. Open nominations from general members were sought after, but no nominations were made. The Committee nominated five individuals based on the potential for bolstering KISS' ability to reach out to peer professional societies, including statisticians in industry and government sections. Dr. Mi-Ok Kim accepted the nomination and became the sole candidate. The Committee thanked Dr. Mi-Ok Kim again. The Election opened on Dec. 1 and closed on Dec. 12. Dr. Kim is a world-class researcher in adaptive clinical trial designs, semi- and non-parametric analysis of longitudinal and survival data, and causal inference. She had served as an executive director and board member of KISS. She also held faculty positions at the University of Cincinnati and the University of Kentucky in the past.

## Letter from President-Past, MoonJung Cho

Dear KISS Members and Friends,

It's been my honor to serve the Society as President. The transition for the next administration has been completed, and I am relieved to say that it has all gone smoothly.

The primary objectives of our society are to promote educational, charitable and scientific aims, while also providing our members with opportunities to lead and serve - I hope that you will be interested in these opportunities.

I would like to thank our officers, board members, and the editor who have served the Society with me. I am immensely proud of the work we've done together. Thanks to their exceptional work and support, KISS has made immense progress in becoming a stronger organization.

As you will be aware, Ji-Hyun Lee (a long-time KISS Board member) responded to the ASA leadership opportunity, and she is running the ASA President election. Throughout my presidency, I have known her as a person I could trust and depend on, and it is rare to encounter a person like Ji-Hyun, who is genuine, generous, and capable. I am very happy for the ASA.

I wish the best to Jae-Kwang Kim (President) and Mi-Ok Kim (President elect), officers and board members. They bring a great deal of passion and commitment to their roles. I hope that it will be matched by yours, so that their leadership can have the greatest impact.

May KISS be always blessed with your support.

Most gratefully,

MoonJung

---

## Letter from President-Elect, Mi-Ok Kim

Dear KISS members,

Greetings from San Francisco. I am humbled and honored to have been nominated and elected as the President for the Year 2023. As the President-elect, I am excited to work with Dr. Jae-Kwang Kim, the current President, and assist him in leading KISS in the coming years. I am also thrilled to collaborate with the past President, MoonJung, and the other officers and board members.

As some of you may remember, I had the privilege of serving as the inaugural Executive Director of KISS. During my tenure, I had a front-row seat to observe how KISS started and has evolved over the years. In fact, my memories of Korean statisticians' meetings predate KISS. A small group of ten and twenty statisticians used to gather at the time of the Joint Statistical Meetings. KISS has come a long way since then in becoming one of the key international statistical organizations recognized by ASA and other fellow international organizations, like ICSA and IISA. This would not have been possible without the collective efforts of many individuals, spearheaded by notably Dr. Dongseok Choi, founding President of KISS, past presidents Mimi and Don, and past and current officers. But above all, it is thanks to you, our members, who have taken an interest and added your voices to what KISS is up to.

Undoubtedly, I have been one of the biggest beneficiaries of KISS. Looking back, I realize that I owe KISS a good portion of my organizational leadership experience and training. Through my work as the inaugural Executive Director, I learned how to organize meetings and events. Most importantly, I had the opportunity to get to know many great individuals, both older and younger, who willingly shared their experiences, struggles, achievements, lost battles, and some successful ones - those that we do not learn at school. It is my privilege to serve KISS as the President-elect and contribute to continuing KISS to nurture new and existing members in the same way it has done for me.

As we look forward, this JSM will be the second in-person meeting after the pandemic. I hope to see you all in Toronto this year.

Best wishes,

Mi-Ok Kim

# KISS Officers' Reports

---

## Financial Report

As of Dec 31, 2022, KISS's balance is \$12,322.71 with the net decrease of \$228.11 during Year 2022. The total income of \$4,945 includes donation of \$3,000 from Statistics Korea, donation of \$500 from Dr. Ji-Hyun Lee, regular membership fee of \$900, and KSS joint membership fee of \$545. The total expense of \$5,173.11 includes JSM annual meeting relating cost of \$3,221.17, web-maintenance and communication cost of \$1025.94, awards and staff appreciation of \$700, and miscellaneous fee of \$226.

## Membership Directors' Report

Total membership: 226 (Lifetime: 72, Annual: 41, Students: 31, KSS co-members: 82)

KISS hosted a session for students pursuing statistics graduate degrees in the U.S. (통계 대학원 유학설명회)

The session was successfully held on Jan 18th virtually with about 60 participants, five panelists, and one moderator. Here are the list of the panelists and the moderator.

Panelists Dr. Hyokun Yun, Amazon  
 Dr. Jaewoo Park, Yonsei University  
 Dr. Jeong Hoon Jang, Yonsei University  
 Dr. Yei Eun Shin, Seoul National University  
 Dr. Yeonhee Park, University of Wisconsin—Madison

Moderator: Dr. Won Chang, University of Cincinnati

The panelists were invited to have discussions on the following topics:

- Why do you want to study in the U.S. and pursue a graduate degree in Statistics?
- What are the possible career paths after graduation?
- What were the hardest things you ran into while studying in the U.S.?
- What were the most helpful/encouraging things?
- How can I prepare for applications for graduate schools?
- As an admission committee member/reference letter writer, what are the most important aspects of an application?

After about 50 minutes of discussion on these topics, students asked questions— most of them are asking for more detailed advice on how to prepare for graduate admissions.

## Communications Director Report

### 1. Create a Webinars page in KISS website

To improve the KISS members' convenience, we added a new page that provides webinars postings. You can find the "WEBINARS" page under the "NEWS" drop-down menu.

### 2. Update on the KISS mailing list

Previously KSS members who had joint KISS-KSS membership were not in the KISS mailing list. We added those KSS-KISS joint members to the KISS mailing list.

## Program Chair Report

The 2022 JSM was held in Washington, DC between August 6th - 11st. KISS sponsored the following sessions.

### Invited Sessions

- Spatial Statistics and UQ: Foundations for Innovation in Environmental Science (organized by Dr. Won Chang)
- The Early Bird Catches the Worm: Sequential Decision Making as a Framework in Time of COVID-19 Pandemic (organized by Dr. Dong-Yun Kim)
- Recent Innovations in Method Developments for Risk-Based Screening and Health Policy Modeling for Cancer (organized by Dr. Eunji Choi)

### Topic-contributed Sessions

- Applied Bayesian Methods in Science (organized by Dr. Seongho Song)
- Astrostatistics: Innovative Statistical Methods for Foundational Astrophysical Sciences (organized by Dr. Hyungsuk Tak)

### Invited Poster

- Functional Connectivity of Backbone Structure of Brain Organization in Cognitive Aging using Weight Sets of Persistent Homology by Dr. Hyunnam Ryu

### Contributed Posters

- A Fast Kernel Independence Test for Cluster-Correlated Data by Dr. Hoseung Song
- Fault Variable Identification in Hotelling's  $T^2$  Procedure by Dr. Joungyoun Kim

The 2022 Summer Conference of the KSS was held between June 23rd - 25th at Seoul National University, Seoul, Korea. KISS sponsored two sessions.

### Session 1: Recent Advances in Biomedical Data Analysis

- Unifying Additive p-value Combination Tests by Dr. Yeonwoo Rho
- Longitudinal Study on Bivariate Time-varying Associations between Two Binary Variables by Dr. Hyunkeun Cho
- Improving the Efficiency of Estimation for Case-cohort Studies by Dr. Soyoung Kim

### Session 2: Advanced Statistical and Machine Learning Methods for Large-Scale High-Dimensional Data Analysis.

- Inductive Global and Local Manifold Approximation and Projection by Dr. Jungeum Kim
- Joint Semiparametric Kernel Machine Network Regression by Dr. Byung-Jun Kim
- Computer Model Calibration with Time Series Data using Deep Learning and Quantile Regression by Dr. Won Chang

## KISS Webinar Series (2022)

Speaker	Title
Dr. Yeonhee Park <i>UW Madison</i>	Envelope-Based Application to Real Data
Dr. Won Chang <i>U of Cincinnati</i>	Computer Model Calibration With Time Series Data Using Deep Learning and Quantile Regression
Dr. Hang Joon Kim <i>U of Cincinnati</i>	Bayesian Model Calibration and Sensitivity Analysis With Ordinary Differential Equation Modeling
Dr. Kyu Ha Lee <i>Harvard University</i>	Outcome-Specific Variable Selection for High-Dimensional Multivariate Zero-Inflated Count Data
Dr. Hwanhee Hong <i>Duke University</i>	A Bayesian Approach for Handling Covariate Measurement Error When Estimating Population Treatment Effects
Dr. MinJae Lee <i>UT Southwestern</i>	Statistical Methods for Various Measurement Issues
Dr. Kwangho Kim <i>Harvard University</i>	Scalable Kernel Balancing Weights in a Nationwide Observational Study of Hospital Profit Status and Heart Attack Outcomes
Dr. Wooseok Ha <i>UC Berkeley</i>	Fast and Flexible Estimation of Effective Migration Surfaces

## KISS Events in 2022

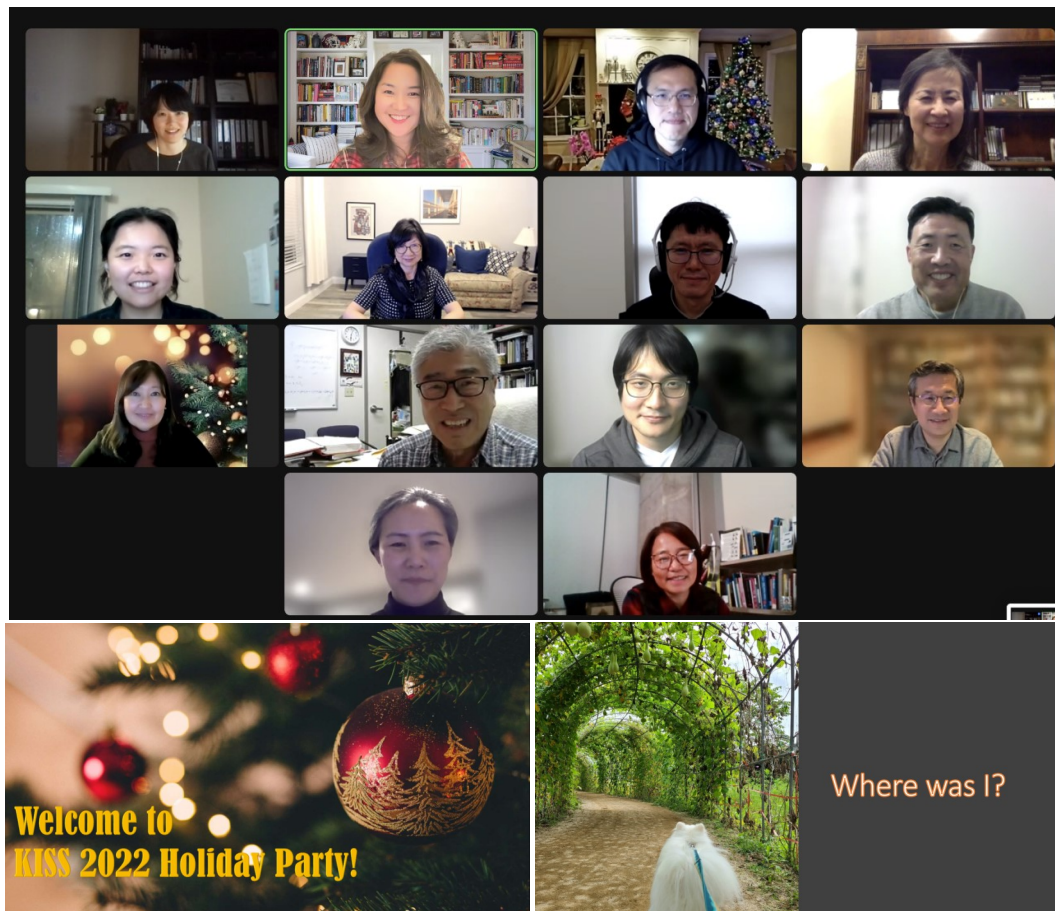
### KISS Annual Meeting at JSM

The 2022 KISS Annual Meeting was held at the JSM on August 8th, 2022 in Washington, DC.

1. Executive Director Julia Lee opened the KISS Annual Meeting.
2. Dr. Ji-Hyun Lee (the University of Florida) gave an invited talk on “Perspectives on Leadership”. We were very excited when Professor Ji-Hyun Lee had accepted our invitation to be an invited speaker. When we’d given the invitation we were not aware that she had been nominated for the 2023 ASA Presidential Election! Her presentation was powerful and touched on many aspects of leadership: the personal cost and the potential impact to the community.
3. President MoonJung Cho reported the membership and finance status (as of June 30<sup>th</sup> 2022); reported that KISS had created new positions (Membership Director and Student Representative) in the executive body; and acknowledged outgoing and incoming officers.
4. The KISS Annual Meeting attendees had networking over delicious refreshments sponsored by Statistics Korea.
5. Adjourn

### KISS Christmas Party

The KISS Christmas Party was held on December 14th virtually. Thanks to President Jae-Kwang for sharing goals and plans for bright future of KISS. It was a great opportunity to farewell to Past President MoonJung and welcome President -elect Mi-Ok. Thanks to the party planners Won, Heekyung, Julia, MinJae, Summer, and MoonJung!



## Photo Competition: *Where was I?*



- ◀ MoonJung traveled to Scotland on the Caledonian Sleeper. Hokwon figured out she was in Scotland by its name *Caledonian!*

**Fun Fact:** Caledonia is a romantic or poetic name of Scotland.

*Lay of the Last Minstrel (extract), Sir Walter Scott*

O Caledonia! stern and wild,  
 Meet nurse for a poetic child!  
 Land of brown heath and shaggy wood,  
 Land of the mountain and the flood,  
 Land of my sires! What mortal hand  
 Can e'er untie the filial band  
 That knits me to thy rugged strand?  
 Still as I view each well-known scene,  
 Think what is now, and what hath been,  
 Seems as, to me, of all bereft,  
 Sole friends, thy woods and streams were left;  
 And thus I love them better still,  
 Even in extremity of ill.  
 By Yarrow's stream still let me stray,  
 Though none should guide my feeble way;  
 Still feel the breeze down Etrick break  
 Although it chill my withered cheek;  
 Though there, forgotten and alone,  
 The bard may draw his parting groan.



- ◀ None of us could figure out which BTS concert Julia went. It was in Las Vegas, not Los Angeles!



Guess where our President Jae-Kwang was! Find him and ask where he was during the KISS annual meeting :)



- ◀ Most of the party attendees thought he was in a city in SoCal until someone found a Korean word “미소” on a yellow fish-shaped terracotta. Won visited a winery called Chateau Miso in Yeongdong, Chungcheongbuk-do.

---

## Members' News

### ***Dr. Ji-Hyun Lee, nominated for the 2025 ASA Presidency***

Dr. Ji-Hyun Lee, Professor at the University of Florida, is running for the ASA president! Please find the interview in the Member's Profile section (page 12 - 14) to learn more about her.

### ***Dr. Eun-Yong Mun, APS fellow***

Dr. Eun-Yong Mun, Professor at the University of North Texas Health Science Center, was recognized as a Fellow of the Association for Psychological Science (APS).

### ***Dr. Jong-Min Kim, Editor-in-chief for Measurement: Interdisciplinary Research and Perspectives***

Dr. Jong-Min Kim, Professor at the University of Minnesota-Morris, was appointed to be the Editor-in-chief for *Measurement: Interdisciplinary Research and Perspectives* which is a SCOPUS, Emerging Sources Citation Index, and Q1 referred journal. Please give our support to his visions; make the journal to have higher impact and expand its topics to measurements in biostatistics, econometrics and statistics covering educational statistics methods.

## Awardees at JSM 2023

Congratulations to the KISS Outstanding Student Award recipients! Please see the Member's Profile section (page 15 - 18) for more details.

- DongKyu Cho, Yonsei University
- Hyeongseon Jeon, Iowa State University
- Jenny Lee, Harvard University
- Xi Fang, Medical College of Wisconsin
- Yeseul Jeon, Yonsei University

## Upcoming Meetings

### ***2023 International Indian Statistical Association (IISA) Conference***

The 2023 IISA Conference will be held in Colorado School of Mines, Golden, Colorado from June 1st to 4th. KISS-sponsored sessions will be announced in timely manner.

### ***2023 Korean Statistical Society (KSS) Summer Conference***

The 2023 KSS Summer Conference will be held at Pukyong National University (부경대학교), Busan from June 29th to July 1st, 2023. KISS-sponsored sessions will be announced in timely manner.

### ***2023 Joint Statistical Meetings (JSM)***

The 2023 JSM will be held in Toronto, Canada between August 5th - 10th, 2023. KISS-sponsored sessions will be announced in timely manner.

### ***KISS Board of Directors Meeting***

5-7 PM (ET), 06/AUG/2023 (Sun)

### ***KISS Annual Meeting***

7-8 PM (ET), 07/AUG/2023 (Mon)

## Travel to Canada - Essentials

### Entering Canada

When you travel to a foreign country, the first step begins with a visa; it's just crossing a line between Canada and the States, but some of you might need approval for an Electronic Travel Authorization (eTA). [Canada Immigration and Citizenship website](#) is a good starting point. Fortunately, U.S. citizens and permanent residents only require a valid passport (and a green card). If you travel with a Korean passport by any non-air transportation (car, train, bus, boat, or cruise), you can go with a valid passport and the documents for returning to the States. However, when it comes to using flights, an additional document called eTA is necessary; please visit [the official website](#) for an application.

### How to get to the meeting from the Toronto Pearson International Airport (YYZ)

The 2023 JSM will be held at the [Metro Toronto Convention Centre](#) (225 Front St. W, Toronto) in downtown Toronto. Using public transportation is highly recommended because the convention center is a six-minute walk from Union station.

The most affordable choice is the [Union Pearson Express \(UP Express\)](#). It takes 25 minutes to Union Station from the airport and costs \$12.35 (or \$9.25 with PRESTO) for a one-way trip. Multiple PRESTO devices are available on a platform; tap your card before getting in to the train; tap off the card at your destination to avoid extra charge. Please see the table for the train schedule.

UP Express Schedule			
Pearson → Union		Union → Pearson	
<i>Weekdays (M-F)</i>	<i>Weekend/Holiday</i>	<i>Weekdays (M-F)</i>	<i>Weekend/Holiday</i>
First train 5:27 AM	First train 6:27 AM	First train 4:55 AM	First train 6:00 AM
Trains run every 15-minute	Trains run every 15-minute	Trains run every 15-minute	Trains run every 15-minute
Last train 11:27 PM	Last train 11:27 PM	Last train 11:00 PM	Last train 11:00 PM

If traveling with a group of people or large bags, Uber or Lyft are another option for you. It takes about 30-35 minutes to the convention center and costs about \$36-40. Travel time and cost may vary by traffic conditions.

### Using public transportation in Toronto

Greater Toronto is well-connected through public transportation: UP Express, GO Transit, and TTC (subway/bus/streetcar). PRESTO is a stress-free choice for travelers who don't want to carry a bag of coins; bus or streetcar drivers don't carry change. However, when you look out for how to use PRESTO, you might be confused of its various options: PRESTO Card, Contactless, and Paper Tickets. Don't worry. Here's the short summery of what you'd get.

**PRESTO Card** is for Toronto locals who use public transportation on daily basis; it is only beneficial to purchase \$6 PRESTO Card when you take TTC (subway/bus/streetcar) more than 120 times. Thus, this is NOT the best option for travelers.

**PRESTO Contactless** is a go-to option for travelers who plan to use UP Express or [GO Transit \(Suburbs, Niagara Falls\)](#). All you have to do is tapping your credit card, including in a mobile wallet, and enjoying the discounted PRESTO fare. Please note that PRESTO Contactless is not available for TTC (subway/bus/streetcar) as of March.

**PRESTO Paper Ticket** is a great option for TTC (subway/bus/streetcar) users. You can purchase paper tickets at any subway stations or Shoppers Drug Mart, and PRESTO paper tickets also allow 2-hour transfers on the TTC. Please purchase the best ticket based on your occasion: One-ride (\$3.25), Two-ride (\$6.50), and Day Pass (\$13.50). Day Pass is cost-efficient when you plan to take any TTC transportation 5+ times a day. If JSM offers Convention Pass, the meeting attendees can purchase day passes at discounted price (\$8-10.25/day).

## Member's Profile

### Ji-Hyun Lee, 2025 ASA President Candidate



Dr. Ji-Hyun Lee  
Prof., University of Florida

#### ***Heekyung: Please introduce yourself to KISSers!***

Ji-Hyun: Hi, Heekyung; thanks for having me. I'm honored and excited to share my experience with the KISS members. To give you a little background on me, I received my master's and doctoral degrees from UNC Chapel Hill's Department of Biostatistics in 2000 and 2003. While in school, as a graduate research assistant, I worked at the Lineberger Cancer Center and interned at the National Cancer Institute. I'm currently a Professor of Biostatistics at the University of Florida. My career journey has included positions at Moffitt Cancer Center, where I worked my way up to Full Professor, and the University of New Mexico Comprehensive Cancer Center, where I led the Biostatistics Shared Resource Group. In 2018 summer, I returned to Florida to lead the Division of Quantitative Sciences and the Biostatistics Shared Resource at the University of Florida Health Cancer Center.

Through my career journey, I have mentored numerous graduate and professional students (MDs) and junior faculty.

#### ***The IMF crisis was ongoing in Korea when you came to the U.S. for your master's degree in 1997, and now you are the first Korean American nominated for the ASA presidency. I can't imagine what you've gone through to take a giant leap.***

Back in my graduate school days, things were a bit different than they are now. Even in the master's program, most students in my program received financial support from the school, so I wasn't personally affected significantly by the IMF crisis in South Korea. But when the news reached Chapel Hill, my classmates came to me, showing their sympathy and concern. The kindness I experienced is truly unforgettable, and Chapel Hill holds a special place in my heart.

As a Korean woman, my journey to Chapel Hill to pursue graduate school was a dramatic one. It was because, after spending 10 years working professionally in South Korea, I decided to take the leap and further my education in the United States. On the flight to the States, all I could think about was how I would survive in this new environment. And yes, the transition was not easy. Further, my father suddenly passed away during the first year of graduate school. But, years later, I have not only survived but thrived. I have not only adapted to life in the States but also embraced and made it my own. As a Korean-American woman, I am now ready to lead and contribute to the ASA, the largest professional organization for statisticians and data scientists. However, the journey of my career was not extraordinary. I have been on the typical academic path, from assistant, associate, and full rank, with the tenure process. Along the way, I have also moved to a few places for further adventures and growth opportunities. Each change required a significant effort and stress but ultimately brought great joy and satisfaction. Embracing change is a core part of my character and something I cannot help but do.

#### ***What are your initiatives if elected for the ASA presidency?***

As indicated in [my candidate statement](#) in detail, I will focus on the following three areas: *growing visibility, enhancing opportunities, and diversifying membership*. We need a strategy to ensure our members are represented in science, medicine, society, and policy efforts. I will create many strong bridges with other professional societies in both STEM and non-STEM fields that can promote our discipline. In addition, I am a big fan of leadership training. As our profession diversifies, we need accessible and tailored training to support the evolving needs of our profession. By offering "precision leadership programs," we can create a robust path for future leaders from all backgrounds. I have given a lot of thought to my fellow KISS members when preparing these strategic plans. The word 'leadership' often seems intimidating to many, leading them to shy away from potential opportunities. Lastly, our profession is increasingly diverse, intellectually and culturally. As a founding member of the JEDI Outreach Group and Past President of the Caucus for Women in Statistics, I see opportunities to continue to grow our association. I am committed to helping the ASA reach its potential as a diverse and influential community. Please visit [my website](#) for the ASA election to learn more detailed strategic plans.

#### ***What was the most challenging thing you've experienced as a female statistician? What would be your advice for young female statisticians in the same boat?***

My generation of Korean women experienced vastly different professional life and opportunities in South Korea. Although it must sound so strange to you now, for example, I was expected to make coffee for all my male colleagues and superiors daily. Upon moving to the States, I felt a sense of relief and liberation as many of these restrictive societal expectations were behind me.

Initially, I didn't think that female statisticians would have been treated differently in the statistics field. Yet, encountering explicit and implicit biases toward women happened quickly. For example, I discovered that my salary was lower than that of my male colleagues, who held the same rank (oh dear, talking about salary ("money") was hard). During the 2013 JSM meeting, [Dr. Nancy Flournoy](#) and others collected several hundred signatures to alter the selection procedures for JSM for the extremely limited

female keynote speakers. All my experiences almost sound like old history. However, please note that in the States, the struggle for women's education and equal opportunities in higher education and the workforce has been an ongoing effort and continues to this day. Despite the significant increase in women in STEM during the 1970s, the representation of women in the STEM workforce today remains [below 30%](#). Therefore, I encourage young statisticians to become actively involved in professional organizations like KISS and ASA, and to make their diverse voices heard. Such organizations serve as allies and play a vital role in supporting and advancing their professional growth and development.

***During your CWS presidency in 2017, you successfully introduced the young generation to the organization. What were your strategies, and will they work in the ASA?***

When I started volunteering with [the caucus for women in statistics \(CWS\)](#), I overheard a fellow statistician remarking on “the many older women gathered at a CWS reception at the JSM, discussing feminism.” But during my time as CWS president, the membership saw a significant surge in young female statisticians. I implemented three key strategies - *mentorship, funding, and visibility* - to achieve this growth. Specifically, I established a novel [mentorship program](#), introduced [new awards](#), and made a concerted effort to spread the CWS mission. Google's generous donation had a tremendous impact. By the way, I daydream about having tech giants like Samsung and L.G. sponsor the KISS table and reception and imagine their logos plastered everywhere at the JSM. Someday, will it happen?

While ASA already has several successful programs in place, we must continue to adapt and grow in this data-driven era. My ASA strategies are directly aimed at increasing membership and influence in our society, and my experience with the CWS will undoubtedly be an asset in achieving these goals.

***What are the things you think that Korean American statisticians may follow to make our community more visible?***

We Korean statisticians need to extend a helping hand not only to professional organizations but also to our local communities. We must be proactive in giving back and making a positive impact. Let me share a personal story of my volunteer journey. I'm always on the hunt for new adventures beyond my job. About 15 years ago, I stumbled upon a journal covering medical issues for performing artists, and I was instantly intrigued. So, I reached out to the editor and offered my statistical know-how for the journal. They were thrilled, and I became their first-ever statistician contributor (of course, it had a very low-impact factor, you can imagine). I was having a blast reviewing for the journal until I thought I may have overstayed my welcome (they probably got tired of hearing from me). But I'm still their only statistician reviewer. Not glowing, not *JASA* or *Biometrika*, but I am confident that my contributions have positively impacted the field of science in arts. Who would've thought that my volunteer work would pay off in unexpected ways? One of the editors wrote a glowing reference letter for my ASA Fellow application, highlighting me as almost like an “angel.” Because of this experience with researchers in art, currently, I am the primary statistician for [ONOP](#), a 10 million-dollar project, a national arts and wellness initiative. Are you curious about statistics related to law, justice, the opioid crisis, homeless issues, climate change, or gun violence? These are all pressing issues that require our expertise. As statisticians, we have a unique set of skills and knowledge that can be applied to a wide range of societal challenges. By actively engaging in initiatives that benefit society, we not only make a positive impact, but we also increase the visibility and recognition of the statistics community. It's a win-win situation, where we can make a difference while also advancing our field.

***What are the perks of being a statistician?***

Being a statistician is an amazing career choice. As John Tukey said, we get to play in everyone's backyard. In my field of oncology, I have the opportunity to work with scientists from a variety of disciplines. Some of the fascinating research projects I'm currently involved in include brain cancer therapeutic trials, molecular microRNA for kidney cancer, smoking intervention trials in Lebanon, art as an intervention for well-being, and diet for patients undergoing hematopoietic stem cell transplants. All of these projects keep me fully engaged, and I thoroughly enjoy my work. When I was younger in South Korea, I struggled to keep the same job for more than 3 years because I quickly became bored with the same tasks. Being a statistician offers such diverse opportunities that I've been able to maintain the same job for over 20 years and still find it exciting!

***How do you live a productive life?***

I wouldn't say I have a specific approach to a productive life, though. I try to make the most of my time and resources, particularly as I don't like wasting anything. Also, I believe in the power of habit. This year, I made a new goal: reading 10 pages of non-statistical books every night instead of watching K-drama! After one year, I will read at least a total of 3650 pages. In my professional life, I love setting goals for myself and my team and working consistently toward achieving them.

## Member's Profile

### Ji-Hyun Lee, 2025 ASA President Candidate - Continued



#### ***What advice would you give to someone entering the statistics profession?***

For those entering the field of statistics, I have two pieces of advice. Firstly, seek out mentors who can offer real-world guidance and support, not just academic mentors or superiors from your places. Secondly, cherish and respect the data you work with. Data is more than just numbers, it's a reflection of life. Embrace and learn from it. That's what statistics is all about.

The photo here was taken during my visit to the UF veterinary clinic to meet a study participant for research on immunotherapy and mRNA vaccines for brain cancer. I observed the process of drawing blood from a dog named Pudgy and was so disturbed by the distress and discomfort she endured. How could I take lightly the biomarker data obtained from subjects like Pudgy or other sick patients?

#### ***Where is your favorite place in town?***

One of my favorite places in town is the state parks with long trails. Whenever I walk on those trails, I feel like I am becoming one with nature. It's a peaceful escape from the hustle of hectic life, and I always leave feeling refreshed.

#### ***MBTI has been a huge trend in South Korea. What is your MBTI at work?***

*"A Partial Introduction to Working with Dr. Ji-Hyun Lee".*

My MBTI is ISFJ, and the 'J' in my type signifies that I'm a Judging personality (90%!). At work, I'm highly organized and decisive. The website describes ISFJs as valuing clarity, predictability, and closure and preferring structure and planning over spontaneity, which describes very accurately about my work style. I appreciate you sharing this website with me. I've taken the test a few times, but this is the first time I truly understand what my type means. I enjoyed reading the results. Although people often mistake me for an extrovert, the test result reveals why I have limited social energy and need to be recharged after a few hours of socializing.

#### ***Lastly, words to KISS members and friends?***

Thank you again for inviting me, Heekyung. I am grateful to my fellow KISS members for celebrating my nomination for ASA President. Regardless of the election outcome, I hope my nomination sparks a rethinking of leadership in the Korean statistics community. We each have the capacity to make a positive impact in our field. Despite the stigma often attached to the words 'ordinary' and 'average', I embrace these terms as a reminder that each of us has the potential to make a meaningful difference. As a person who is just like everyone else, I aim to help individuals and communities reach their full potential and make a better world. I am eager to learn more about your thoughts and ideas; don't hesitate to contact me by email at [jihyun.lee@ufl.edu](mailto:jihyun.lee@ufl.edu).

*The 2023 ASA Presidential Election begins April 3 and runs through May 1.  
Make sure to look for your ballots in your email inbox.*

---

## Yeseul Jeon, Outstanding Student Paper Awardee

*“A Bayesian Convolutional Neural Network-based Generalized Linear Model”*

### ***Please introduce yourself to KISSers.***

Greetings! My name is Yeseul Jeon and I am a Ph.D. student in my 5th year, studying Data Science and Statistics at Yonsei University. My advisors are Dr. Ick Hoon Jin and Dr. Jaewoo Park. I am currently a visiting scholar at Ohio State University in Bioinformatics, where I am working under the guidance of Dr. Dongjun Chung.

### ***What is your current research area/problem?***

My research area encompasses Latent Space Network Modeling, Spatio-temporal Modeling, and assessing uncertainty in Deep Learning Models. I am currently applying these models to spatial transcriptomics data geostatistical data.

### ***What is your future research plan?***

As part of my Ph.D. program, I committed myself to writing two research papers with each of my advisors, who have provided invaluable mentorship in identifying research topics and guiding me through the writing process. Now, I plan to work on one additional paper with each of them to further enhance my research skills.

### ***Why did you join the statistics profession?***

As an undergraduate student, I found my passion for statistics. After working at a data science company for five years, I gained valuable experience in data analysis and problem-solving. I've learned that despite the challenges, there's no greater feeling than the sense of accomplishment that comes with successfully resolving difficult issues. This experience inspired me to pursue a Ph.D. in statistics to further enhance my skills and knowledge in the field.

### ***What is your favorite part of being a statistician?***

Collaborating with experts from various fields is one of my favorite aspects of being a statistician. As a statistician, I enjoy analyzing diverse datasets that require different background knowledge. Through these collaborations, I am constantly learning how to access accurate methods of modeling, interpreting results, and developing new ideas for my models.

### ***What was the best career advice you had?***

When I began my Ph.D. program, I was a person who was interested in many subjects and wanted to quickly produce results without much reflection. One day, my advisor advised me that research requires deeper reflection to understand underlying problems. This advice has greatly impacted my approach to research.

### ***How did you become a KISS member?***

Attending JSM 2022's KISS session was inspiring. Seeing Korean-international members from around the world network and share their ideas motivated me to become a KISS member myself.

### ***How do you like to spend your free time away from work?***

In my free time, I love to spend my day exercising, such as swimming and running. However, the activity that I find most effective in relieving stress is reading books.



## Member's Profile

---

### Hyeongseon Jeon, Outstanding Student Paper Awardee

*"Adjusting for Gene-specific Covariates to Improve False Discovery Rate Estimation in RNA-seq Analysis"*



***Please introduce yourself to KISSers.***

My name is Hyeongseon (Sammy) Jeon. I completed my undergraduate degree in mathematics from Yonsei University and then continued to earn my Ph.D. in Statistics at Iowa State University under the guidance of my advisor, Dr. Dan Nettleton, in 2022. Currently, I am a postdoctoral researcher in the lab of Dr. Dongjun Chung at the Ohio State University.

***What is your current research area/problem?***

At present, I am investigating statistical approaches to multiple testing problems. Previously, I concentrated mainly on adjusting for covariates, but now I am looking into methods that consider additional factors, such as variable selection. In Dr. Dongjun Chung's lab, we study methods suitable for single-cell RNA-seq and spatial transcriptomics data analysis.

***Why did you join the statistics profession?***

During a class at Yonsei University, I was inspired by a professor's statement that statistics is a discipline that involves hearing the voice of data. This perspective deeply impacted me and motivated me to begin studying statistics.

***What is your favorite part of being a statistician?***

I believe statisticians play a pivotal role in determining research direction through data analysis and investigation. The most exciting aspect of being a statistician is highlighting factors that other researchers in different fields may have overlooked and refining research direction actively through discussions with them.

***What was the best career advice you had?***

Dr. Jaekwang Kim once stated that repeatedly generating hypotheses can lead to success as a researcher. When I felt creatively blocked, I used this concept as a jumping-off point, and through discussions with my colleague Dr. Kyu-Sang Lim, I could generate new and original ideas.

***What advice would you give to people pursuing a graduate degree in the U.S.?***

Regardless of the subject matter, discussions with trustworthy colleagues can help bring your research to life and enhance your abilities as a statistician. It is optional for whom you are talking with having a background in statistics, and these discussions may result in new insights or enable you to assess if your proposed methodology is suitable for their needs. I would highlight, as a researcher, your role involves persuading others, and thus effective communication skills are crucial.

***How did you become a KISS member?***

When I attended JSM, senior professors recommended becoming a member of KISS.

***How do you like to spend your free time away from work?***

I do not have a specific hobby, but I might enjoy reading books. Talking with my girlfriend, the person I trust the most, is my favorite activity. When I am stressed, having conversations about our future helps greatly relieve the stress. As a tip for junior researchers, make positive, realistic plans for your future to help alleviate stress when it accumulates.

***What was your unrealistic/funny childhood dream?***

I once heard that Mount Kilimanjaro is the highest mountain a common person can climb. I have also heard that for some people, climbing the mountain can lead to giving up halfway due to altitude sickness. Due to the thrill of uncertainty, climbing that mountain has been one of my childhood dreams.

---

## Jenny Lee, Outstanding Student Paper Awardee

*“Causal Exposure-response Curve Estimation using Generalized Propensity Score Matching in Cohorts with Geographically-varying Study Eligibility Thresholds”*

### ***Please introduce yourself to KISSers.***

First of all, I would like to express my sincere gratitude to the award committee. I recently received Ph.D. in Biostatistics from Harvard University. My dissertation work focuses on developing statistical and causal inference methods for high-dimensional and multi-level data in the area of environmental health for vulnerable populations. I am humbled by the recognition and truly feel honored to be part of the distinguished recipients who have received this prestigious award in the past.

### ***What is your current research area/problem?***

In studying the health impacts of environmental exposures, unique based on the structure of the data, such as high dimensionality and/or multi-level structures. For instance, when investigating environmental impacts on epigenetic markers, outcome data obtained from sequencing are often high-dimensional. Additionally, most environmental health data are necessarily observational, and observational data collected from various sources are often clustered, creating a multi-level structure, and are affected by confounding. In our recent works, we propose statistical methods to tackle these challenges, and we apply the methods to investigate environmental health impacts, both at the genetic level and the population level, in vulnerable populations.

### ***What is your favorite part of being a statistician?***

Statistical methods can be widely applied to many fields such as medicine, environmental health, social science, health policy, and engineering. I enjoy developing new methods and applying it to real world data.

### ***How did you become a KISS member?***

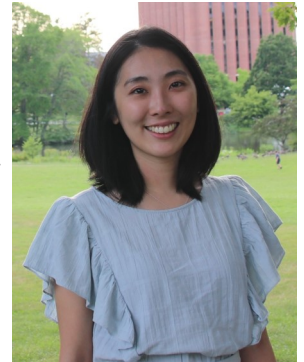
I attended the KISS annual meeting at 2019 Joint Statistical Meetings (JSM) held in Denver. During the meeting, I appreciated activities of KISS for providing precious networking opportunities that connects prominent Korean, Korean-American, and international scholars in statistics.

### ***Where is your favorite place in town?***

I enjoy visiting various museums in Boston such as Museum of Science, Isabella Stewart Gardner Museum, and Boston Children’s Museum.

### ***Please tell us about mentors who made an impact on you.***

I would like to thank my advisors, mentors, and collaborators who encouraged and supported me throughout my undergraduate and graduate studies. Their guidance, mentorship, and feedback have been invaluable in helping me at important stages of my career by providing diverse perspectives and thoughtful suggestions. From them, I learned the value of mentorship, and it has become an important standard in my life as well.



## Member's Profile

---

### Xi Fang, Outstanding Student Paper Awardee

*"Improving Estimation Efficiency for Left-truncated Competing Risks Regression under the Case-cohort Design"*



**Please introduce yourself to KISSers.**

I am currently pursuing a PhD in Biostatistics at the Medical College of Wisconsin (MCW), having previously obtained a Master's degree from Emory University in 2017. Prior to beginning my doctoral studies, I worked as a bioinformatic analyst in Virginia. The complexity of genomic data in that role motivated me to pursue a PhD to gain the skills necessary to develop models for complex data. At MCW, my research interests were shaped by the guidance of my advisors, Dr. Soyoun Kim and Dr. Kwang Woo Ahn, who provided invaluable insights into survival analysis.

**What is your current research area/problem?**

My current research topic is focused on improving the estimation efficiency for competing risks data under a case-cohort design. In large cohort studies, collecting expensive covariate information for all participants can be costly. To save costs, a case-cohort design is proposed, where covariate information is collected from participants who have experienced an event or are selected into a subcohort. By leveraging information from both the case-cohort data and the information outside it, we can significantly improve estimation efficiency. My current research focuses on proposing statistical methods to achieve this goal under case-cohort study designs.

**What is your favorite part of being a statistician?**

One of the most appealing aspects of being a statistician is the ability to work in many different fields with various types of data, such as medicine, government, education, and more. Our job is to utilize the data to decipher the story behind the research and uncover key insights buried within thousands of pieces of information. It's like embarking on an adventure where we never know what treasures we will uncover.

### DongKyu Cho, Outstanding Student Paper Awardee

*"Fast Compartment Model Calibration using Annealed and Transformed Variational Inference"*



**Please introduce yourself to KISSers.**

I received my M.A. from Yonsei University under the guidance of Prof. Jaewoo Park. In my undergraduate years, I double majored statistics and engineering in the same school.

**What is your current research area/problem?**

Broadly speaking, my interest is in incorporating a stream of new findings in other disciplines and probabilistic modeling literature through the lens of traditional statistics.

**What is your future research plan?**

The frontiers of all our frames of knowledge will continue to expand. I aspire to become a scholar that constantly brings these new discoveries to the field of statistics.

**Why did you join the statistics profession?**

Researchers in the discipline, thanks to the interdisciplinary nature of statistics, have shown inclusive and pioneering minds and enjoyed the challenges. Everything I want is in Statistics. It attracts the best of enterprising researchers, generates innovative research topics, and is in constant dialogue with most fields of academia. Here, I will always face new environments and challenges.

**What was the best career advice you had?**

*"Start and finish your first research as soon as possible."*

This was the advice from the Ph.D. student in my undergraduate years. Many fresh researchers, including myself, tend to underestimate the time and effort for the research.

# Call for Papers

## Communications for Statistical Applications and Methods

**Communications for Statistical Applications and Methods** (CSAM) is an official journal of the Korean Statistical Society and Korean International Statistical Society beginning in 2013. It is an open-access journal and contains original articles dedicated to applied research in various fields of statistics and probability, or contributing to applied statistics through innovative data analysis and interpretation. Articles dealing with statistical education and tutorials are also welcomed. In particular, we are interested in your wonderful ideas for special issues. Please contact one of the editors if you have an idea for a special issue.

We welcome articles from all countries. Our objective is to increase the visibility of CSAM journal by growing its content and distribution. By continually raising the quality of the journal and thereby increasing the likelihood of citation, we are working hard to list this journal in Science Citation Index Expanded (SCIE).

We encourage all KSS and KISS members to submit papers via CSAM to reach this goal in the near future.

The journal accepts articles written in English and is published bi-monthly in January, March, May, July, September, and November. All of the manuscripts are peer-reviewed. CSAM welcomes only original research articles for the form of publication.

For details about instruction for authors including manuscript preparation and submission, please visit <http://csam.or.kr>.

### Editorial Board

#### Editor-in-Chief

Yoonsuh Jung      Department of Statistics, Korea University, Korea  
[yoons77@korea.ac.kr](mailto:yoons77@korea.ac.kr)

#### Co-Editors

Jung H Jeong      Department of Biostatistics, University of Pittsburgh, USA  
[jjjeong@pitt.edu](mailto:jjjeong@pitt.edu)

Beom Seuk Hwang      Department of Applied Statistics, Chung-Ang University, Korea  
[bshwang@cau.ac.kr](mailto:bshwang@cau.ac.kr)

#### Honorary Editor

Donald B. Rubin      Department of Statistics, Harvard University, USA

Grace Wahba      Department of Statistics, University of Wisconsin, USA

Wayne A. Fuller      Department of Statistics, Iowa State University, USA

#### Managing Editor

Sangbum Choi      Korea University, Korea

#### Editorial Assistant

Su Eon Kim      Korean Statistical Society, Korea

---

## Donations

**Your donation will help the Society continue in our mission, allow us to make improvements, and fund awards for students and young researchers.**

### How to donate to KISS:

Below is a procedure how you can make the tax-deductible donations to the Society.

1. Please inform the president (or the finance director) that you are willing to make a donation. Please see below for the contact information.
2. The president (or the finance director) will inform you where a check can be sent to.
3. After receiving the donation, the president will send you an acknowledgement letter with the tax information so that the contribution can be tax deductible.

### Whom to contact:

President  
Jae-Kwang Kim  
*Iowa State University*  
[jkim@iastate.edu](mailto:jkim@iastate.edu)

Finance Director  
Hang-joon Kim  
*University of Cincinnati*  
[hang.kim@uc.edu](mailto:hang.kim@uc.edu)

---

## Become a KISSer!

The Korean International Statistical Society (KISS) is a non-profit corporation that is organized and operated for educational, charitable, and scientific purposes only.

KISS website is at [www.statkiss.org](http://www.statkiss.org). The website contains the information about KISS, news and events, job opportunities, upcoming and past meetings, and membership online registration. The sign-up and renewal process is automatic.

Members can sign-up or renew their membership on a rolling basis. Current membership fees are \$300 for the lifetime membership, \$25 for the regular annual membership, \$10 for the spouse membership, and FREE for the student membership. Members can also edit their personal information such as email and affiliations. They can also opt-in to receive job posting and other announcements through email.

Please visit our website for more information. KISS also has the Twitter account to communicate with its members, including sharing news and information about jobs and conferences. Please follow us **@stat\_kiss** in Twitter. In addition, the KISS Facebook group has been used to share news and photos and to discuss various topics. If you did not yet, please join the KISS Facebook group at <https://www.facebook.com/groups/190717430950968/>.



## Korean International Statistical Society

5305 River Rd. North, STE B,  
Keizer, OR 97303

Email: [info@statkiss.org](mailto:info@statkiss.org)  
[www.statkiss.org](http://www.statkiss.org)

## KISS Officers & BOD Members

### KISS Officers

President	Jae-Kwang Kim (Iowa State University)
President-elect	Mi-Ok Kim (University of California San Francisco)
President-past	MoonJung Cho (U.S. Bureau of Labor Statistics)
Executive Director	Summer Han (Stanford University)
General Director	Jong-Min Kim (University of Minnesota Morris)
Communications Director	Soyoung Kim (Medical College of Wisconsin)
Membership Co-director	Won Chang (University of Cincinnati)
Membership Co-director	Jeong Hoon Jang (Yonsei University)
Finance Director	Hang-joon Kim (University of Cincinnati)
Program Chair (2022-23)	MinJae Lee (University of Texas Southwestern)
Program Chair (2023-24)	Yeonhee Park (University of Wisconsin-Madison)
Student Representative	Heekyung Ahn (Purdue University)
Webmaster	Daniel Couch (1upHealth)

### KISS Board of Directors

2019 - 2024	Hang Joon Kim (University of Cincinnati) Sung Hee Lee (University of Michigan) Eun Sug Park (Texas A&M Transportation Institute) Heejoon Shin (National Center for Health Statistics) Frank Yoon (IBM)
2021 - 2026	Mikyoung Jun (University of Houston) Dongyun Kim (National Institutes of Health) Mimi Kim (Albert Einstein College of Medicine) Ryung Kim (Albert Einstein College of Medicine) Kiseop Lee (Purdue University)
2023 - 2028	Youngdeok Hwang (City University of New York) Zhezhen Jin (Columbia University) Jong-Min Kim (University of Minnesota Morris) Yoonkyung Lee (Ohio State University) Eun-Young (E.Y.) Mun (University of North Texas Health Science Center)